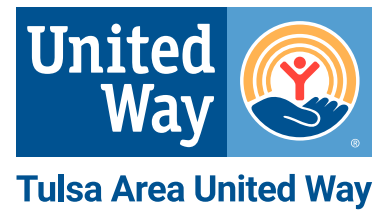


Campaign Year 2022 Summary



How Tulsa Area United Way Improves Lives and Strengthens Communities



1

We annually raise millions of dollars through a diversified donor base of individuals, businesses, and foundations throughout our six-county region.

13th

Tulsa and our six-county service area is **71st** in the size of regions with a United Way but is **13th** in the nation for amount raised.

800+

companies and organizations participated in our annual fall fundraising drive.

20,000+

donors made financial contributions.

2

Thousands of people helped every day through TAUW's investment streams:

Sustainability

Funding through nonprofit partners providing **145 programs** serving education, financial stability and health and safety.

Collaboration

Grants through partnerships across nonprofits and municipalities to address entrenched social problems.

Innovation

Grants that test creative new approaches to make a significant difference.

Capacity Building

Direct Services that strengthen our partners' ability to operate efficiently.

3

We are stewards of a trusted, robust volunteer-led process to assess and invest in community needs for equitable and accountable distribution of funds.

180+ **Community Investments**
Volunteers spend **5,000+ hours** each year analyzing nonprofit partners' finances and operations, deciding how to best allocate funding for programs.

50 **volunteer leaders** serve as oversight and governance for Community Investments.

40 **campaign leaders** connect with businesses and meet with company executives to determine feasibility and work to raise funds for the fall fundraising drive.

4

Total Community Investment:

\$25,500,000

raised through the annual fundraising drive.

\$847,600

raised in contributions outside the campaign to support community projects.

\$2,077,309

in kind donations, including \$1.9 million in donated time.

\$28,424,909

total community investment for 2022.

5

2022 Days of Caring resulted in:

6,421

volunteers performed 250 community service projects.

35,000

pounds of food collected.

268

individuals donated blood, potentially saving 804 patient lives.

2,000

backpacks distributed to area school children.

6

We leverage an expansive network to bring people together and solve complex problems grounded in innovation and hope.

9,000+

volunteers helped improve lives in the six-county region.

67,800+

volunteer hours giving back so others can get ahead in our communities.

\$1,937,309

impact from volunteer hours served.

ENGAGING THE COMMUNITY

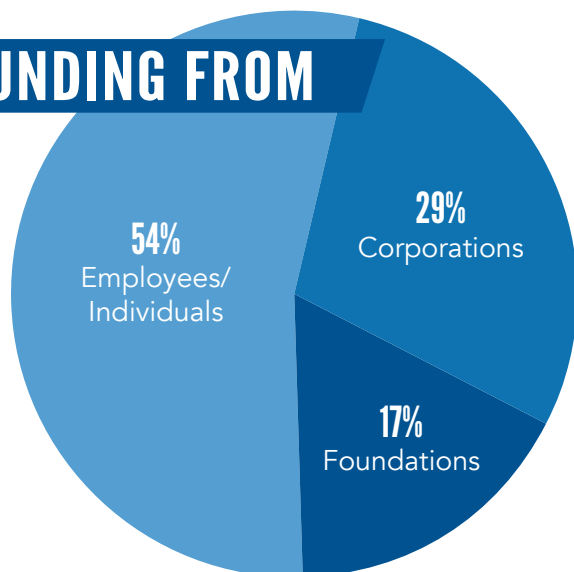
Hundreds of companies and organizations partner with Tulsa Area United Way by participating in our Days of Caring, one of the top 10 Day of Caring programs nationwide. Thousands of volunteers help meet the community's most pressing needs and give our nonprofit organizations a helping hand by completing a variety of service projects throughout the year.

TO SERVE AND GIVE

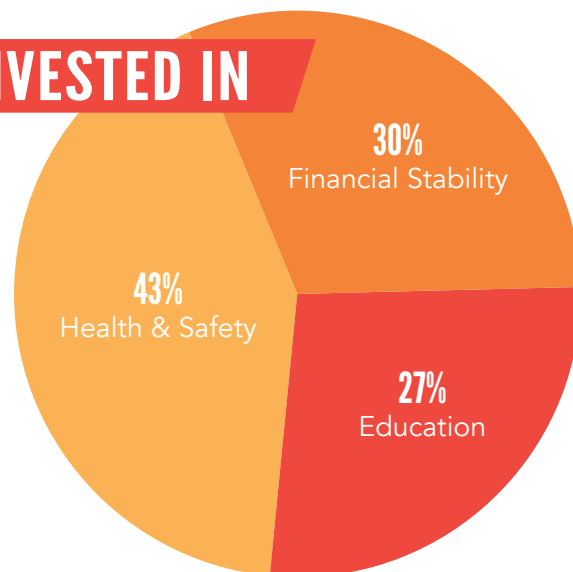


Financials

FUNDING FROM



INVESTED IN



REVENUES

	2022 ¹	2021 ³
Campaigns and Other Contributions	\$26,048,653 ²	\$26,035,183
Collection Loss Provision	(\$720,261)	(\$1,030,517)
Net Investment Return	\$261,281	\$290,921
In-Kind Contributions	\$136,698	\$156,466
Grant Income	\$168,055	\$12,104
Other	\$420,386	\$834,605
Total Revenue	\$25,792,250	\$26,298,762

EXPENSES

	2022	2021
Program Services		
Education	\$5,624,293	\$5,785,779
Health/Safety	\$8,061,487	\$8,103,922
Financial Stability	\$5,061,864	\$5,268,507
Collaborative Grant Funding	\$825,000	\$790,667
Innovative Grant Funding	\$301,000	\$250,000
Other Special Funding	\$1,174,151	\$1,393,890
Community Impact	\$1,235,714	\$1,003,473
<i>Total Program Services</i>	<i>\$22,283,509</i>	<i>\$22,596,238</i>
Management and General Expense	\$1,392,264	\$1,186,812
Fundraising Costs	\$2,347,562	\$2,111,639
Total Expenses	\$26,023,335	\$25,894,689
Change in Net Assets	(\$231,085)	\$404,073
Change in Restricted Net Assets	(\$1,664,005)	764,083
Unrestricted Change in Net Assets	\$1,432,920	(\$360,010)
Unrestricted Net Assets, Beginning of Year	\$10,490,682	\$10,850,692
Unrestricted Net Assets, End of Year	\$11,923,602	\$10,490,682

¹2022 amounts are unaudited

²As of 12/31/2022

³Revised